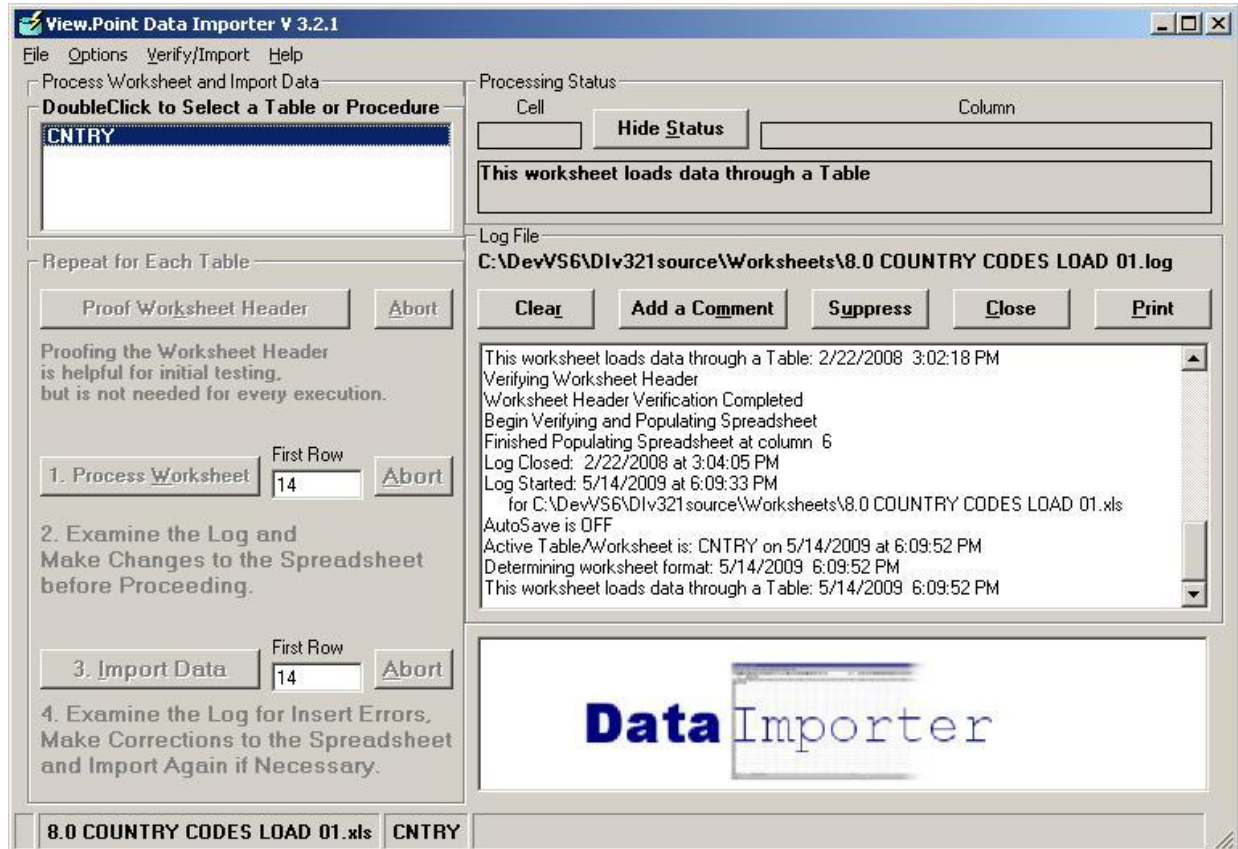


Viewpoint Data Importer



The DataImporter (DI) is a convenient method for loading large amounts of data into Pointman.

Data is loaded into a specially formatted Excel spreadsheet (template) for each type of data.

DI checks that the template and data are valid and in the correct format.

It reports data problems including missing or invalid data.

A log is created with detailed messages to aid in correcting data problems.

Transformations and calculations are used in the templates to make user data entry simple.

Finally, when the data is imported, a log is created for errors not detectable until the load process.

The unsuccessful records are flagged for review and correction.

The template can then be used to attempt to load only records that previously failed.

Templates exist for the data types listed below. Additional formats can be created upon request.

Cost Schedules

GL Account

GL Journals

Customers

Customers at Segment

Customer Extended

Attributes

Suppliers

Parts

Parts at a Segment

Product Families

Part Costs

Price Lists

Bill of Materials

Finished Goods Lists

Material Movement

(for initial inventory load)

Master Routings

Documents

Part Lots-Bills of Serial

Open Sales Orders

Open Invoices

Open Purchase Orders

Open Vouchers

Sales Forecasts

Persons

Zip Codes